



World-class turf maintenance equipment

OPERATING INSTRUCTIONS PARTS LIST & DRAWINGS

ZIG ZAG BRUSH 6ft & 8ft models

MACHINE REFERENCE	ZZB/6 ZZB/8
SERIAL NUMBER
CN CODE	9603 50 00



SISIS, Ashbourne Road, Kirk Langley, Derbyshire, DE6 4NJ, England.
Tel: +44 (0) 1332 824 777 | Fax: +44 (0) 1332 824 525 | Email: info@sisis.com | www.sisis.com

A division of Howardson Ltd - a proudly British company
Company reg no 641526 - Vat No GB 345 9918 12

We want you to obtain the best performance from this machine. If you have any difficulty in carrying out the following instructions, please contact us or your local SISIS Territory Manager or SISIS Dealer.

This 6ft (183cm) or 8ft (244cm) width brushing unit consists of 4 or 5, 2ft (61cm) long brush sections, mounted on a main frame so that each brush is operating at an angle to the forward motion of the towing vehicle. This type of brushing has been found to improve the movement of top dressing material down to the base of the grass sward, with very few passes. It is also extremely beneficial for 'working in' sand on artificial grass surfaces. In combination with other SISIS attachments, it will effectively assist in the maintenance of hard porous pitches and running tracks.

The Zig Zag brush can be used with the Quadraplay or TwinPlay as a single unit or in combination with other brushes. For best results it is recommended that at least one single brush unit should be mounted behind the Zig Zag Brush.

FITTING THE ZIG ZAG BRUSH TO THE FRAME

Lift the Quadraplay or TwinPlay frame on the tractor linkage. Remove the 4 bolts and nuts (items 3 and 4). Lower the frame onto the brush assembly and replace the bolts and nuts through the 2 jacks (Quadraplay). Adjust the height for suitable operation on grass, hard play and artificial grass surfaces.

REPLACING BRUSHES

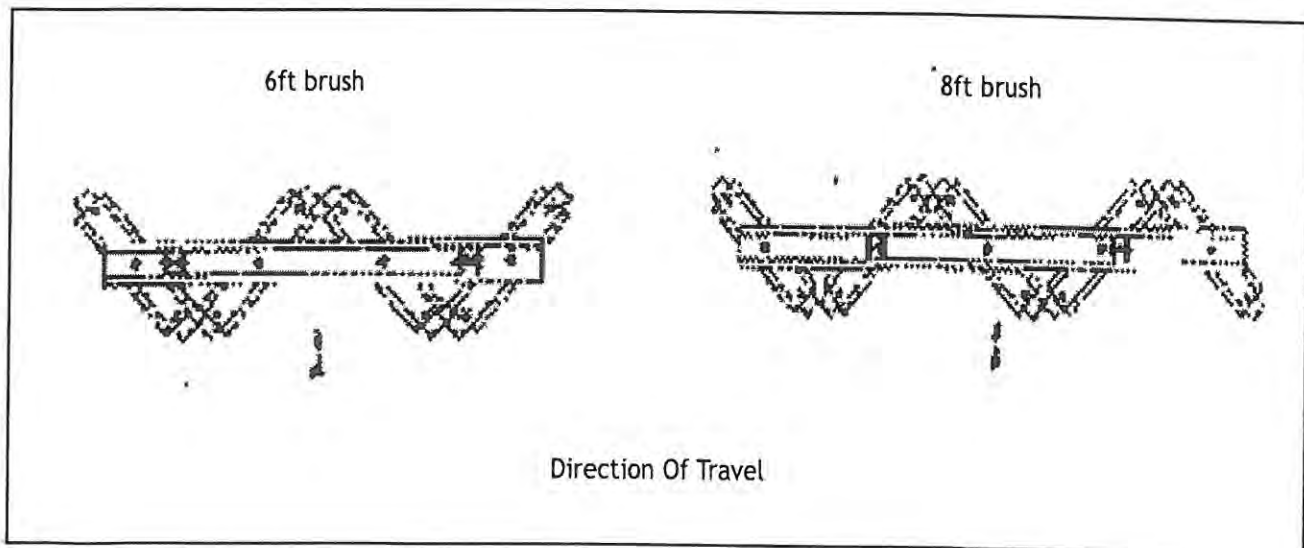
Lift the Zig Zag brush on the tractor hydraulics. Remove the 3 nuts and bolts fixing the brush to the frame. Fit the new brushes in place with the 3 units and bolts supplied. Adjust the height of the brush assembly to suit other implements fitted to the frame.

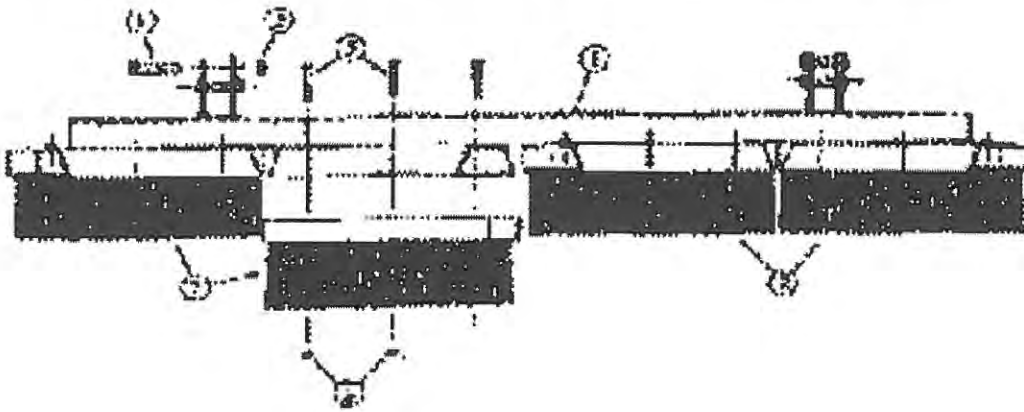
Replacing all the brushes together will prevent uneven wear or 'striping' of the surface.

Brushes, part number 1520, are available direct from the manufacturer. Telephone and fax numbers are shown below.

SISIS CONTACT TELEPHONE NUMBERS

Sales	01625 503030
Fax all departments	01625 427426
Email all departments	info@sisis.com
Website	www.sisis.com





<i>item</i>	<i>part</i>	<i>description</i>	<i>6ft</i> <i>qty</i>	<i>8ft</i> <i>qty</i>	<i>item</i>	<i>part</i>	<i>description</i>	<i>6ft</i> <i>qty</i>	<i>8ft</i> <i>qty</i>
1	32608	brush frame	///	1	4	1/1176	bolt	4	4
1	32208	brush frame	1	///			setscrew)	supplied with brush	
2	1520	brush	4	5			nloc nut)		
3	1/1231	nyloc nut	4	4					

